



ONSTREAM GROUP

A World of Experience, right here



Delivering our promise of **consistent,**
high quality service worldwide

ONSTREAM GROUP

With over 40 years of international experience, Onstream's services and solutions are designed to deliver operational efficiency to our clients.

We do this by leveraging our deep understanding of key Industrial markets, technical services and industrial infrastructure to meet our clients' needs.

Business Service Lines



MANPOWER



LOGISTICS



ASSET INTEGRITY



A World of Experience, right here

VISIT [ONSTREAMGROUP.COM](https://onstreamgroup.com)



GROUP VALUES

PURPOSE

Your partner of choice, providing
local solutions at global quality
standards



HSSE



Onstream Group
GOLDEN RULES
"where safety meets experience"



We immediately **report any unsafe acts and near misses**



We start our work with a **Last Minute Risk Analysis** or **Risk Assessment**



We immediately **stop the job** if in doubt



We do not walk under **suspended load** during crane operations



We always use proper and certified **Personal Protective Equipment**



We always make sure we get a **work permit and proper training**



We always use certified fall-protection during **working at height**



We always wear **seatbelt**, never use **phone** and never exceed **speed limits** while driving



We always use **appropriate and adequate procedures**



We are never under the influence of **alcohol or drugs** during work and driving.



Goal Zero focuses on aspects of:

- QUALITY
- HEALTH
- SAFETY
- ENVIRONMENT
- ROAD TRAFFIC SAFETY



GROUP KEY FACTS

WORKFORCE



+500
Professionals

CLIENTS



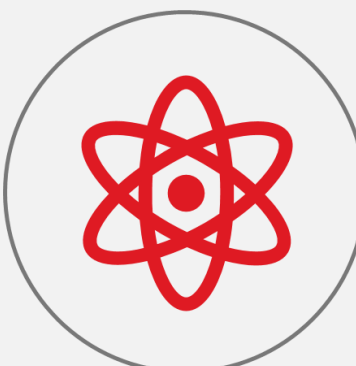
+100
Worldwide

PARTNERSHIP

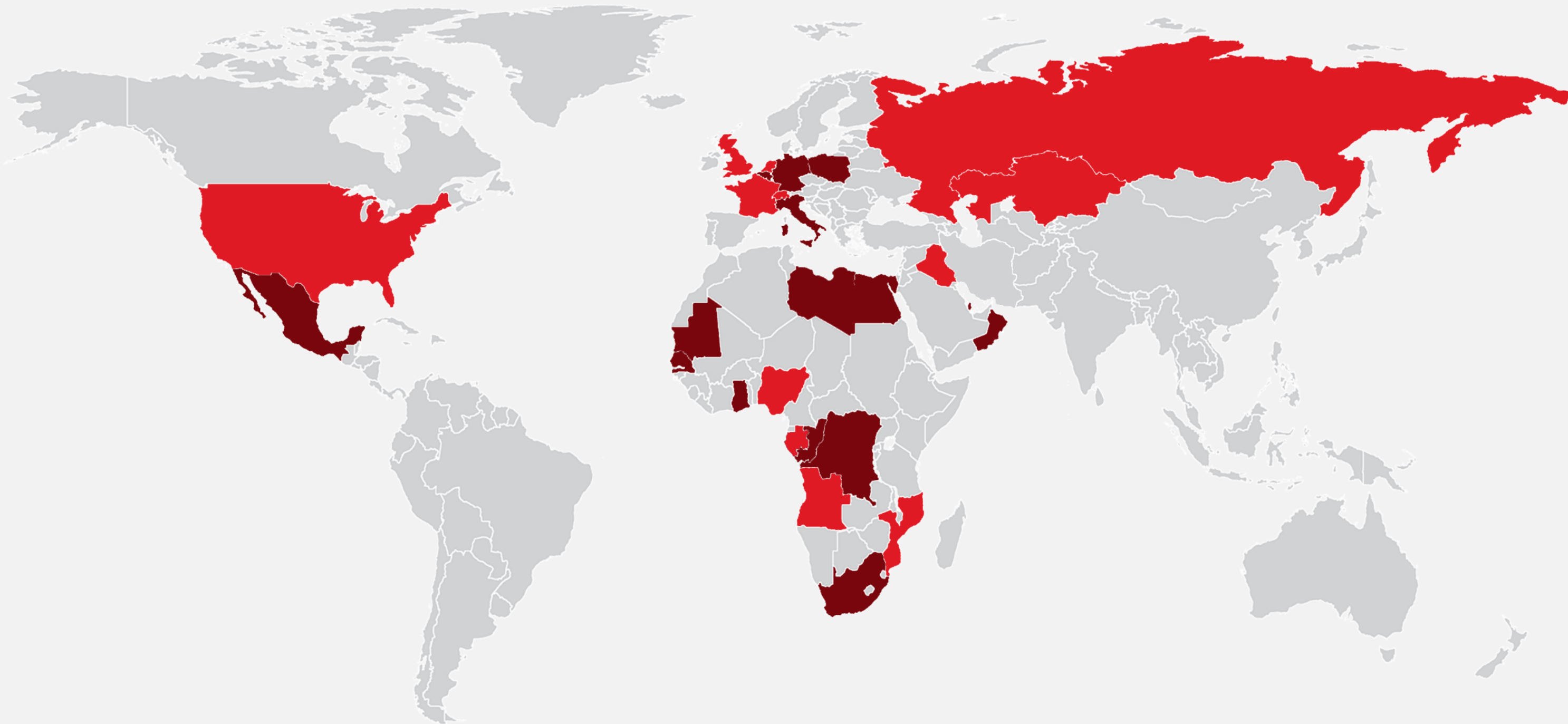


+30
Companies

NETWORK



200,000
Professionals
in our network



● ONSTREAM OFFICES

● ONSTREAM PARTNERS



VISIT [ONSTREAMGROUP.COM](https://onstreamgroup.com)

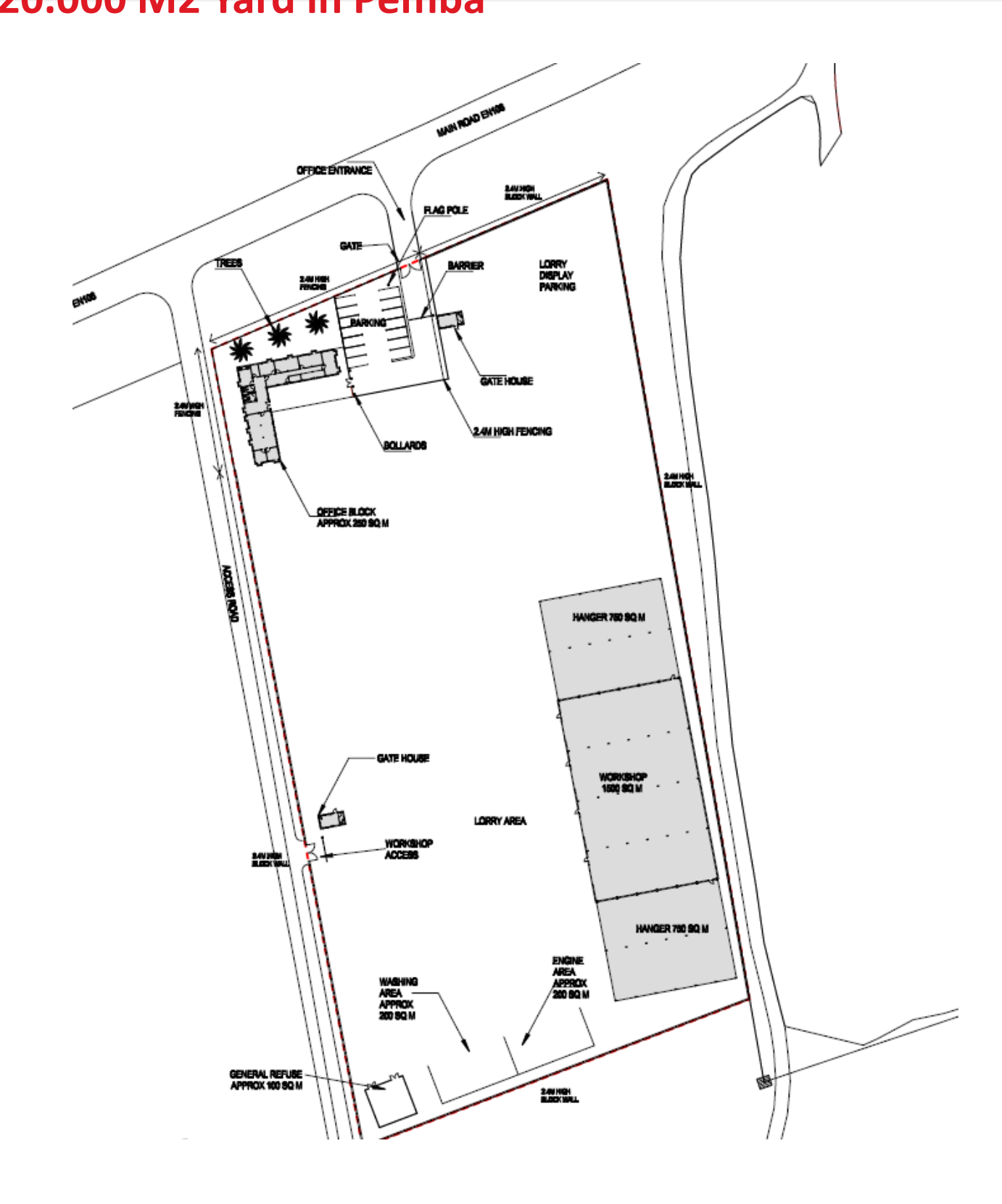
SECTOR COVERAGE



VISIT ONSTREAMGROUP.COM

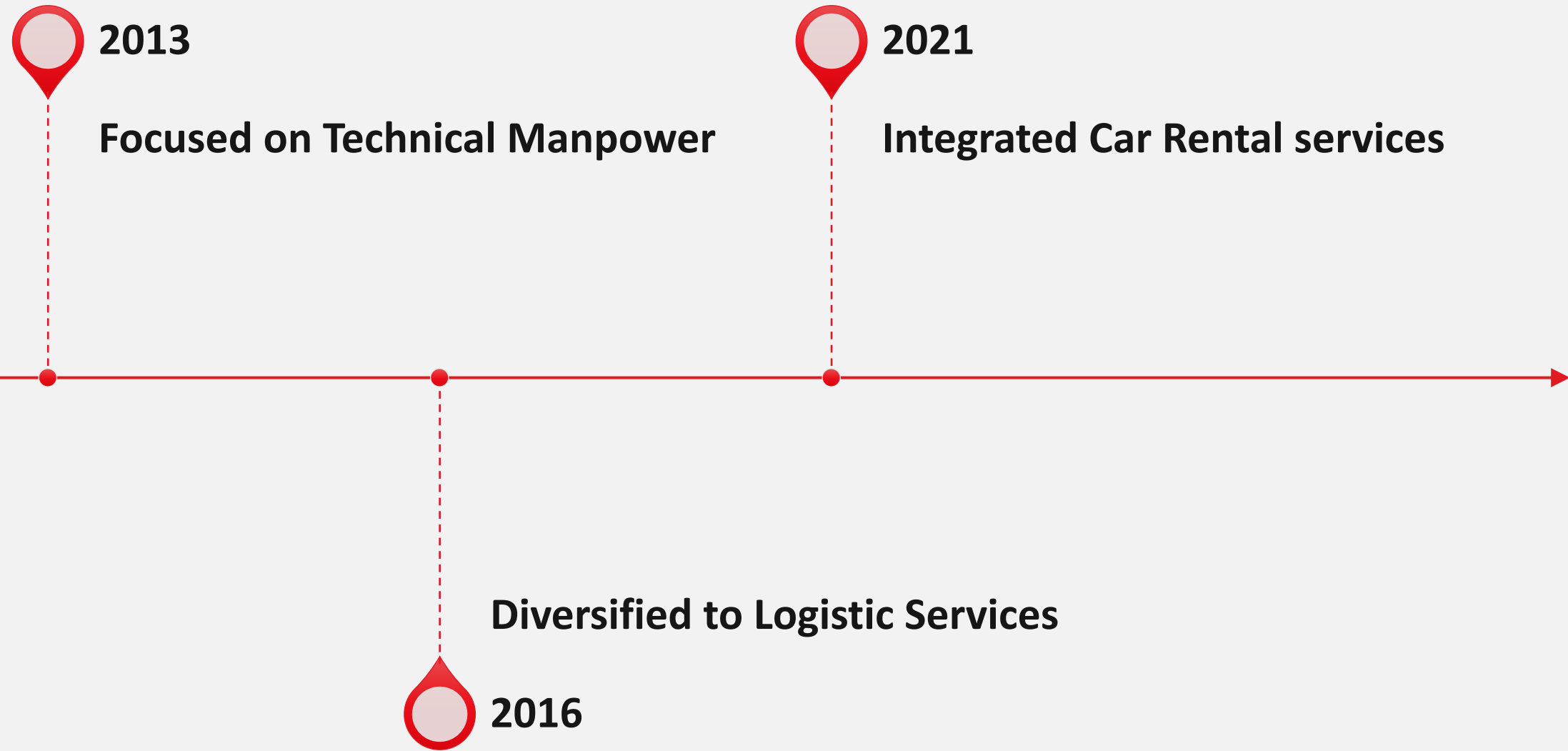


20.000 M2 Yard in Pemba



Onstream Onshore Base is located in Metuge District, Pemba, Republic of Mozambique. It is located next to the main road EN106, and has two entrances, both easily accessible, without any limitations

About Onstream Oilfield Services Mozambique



SERVICES PROVIDED IN MOZAMBIQUE



LOGISTICS

- Dedicated car rental services
- Tailored transportation and logistics solutions
- Fleet management and mobility services
- Full lifecycle maintenance for heavy and light equipment
- Qualified operations team providing global support



MANPOWER

- Talent sourcing for industrial & technical roles
- Database of over 200,000 highly skilled consultants
- Experienced recruitment team with proven industry knowledge
- Administrative & payroll solution in line with applicable legislation
- Nationalisation, HSSE and competency training programs



ASSET INTEGRITY

- Safe, reliable and cost effective asset intervention
- Full operational lifecycle applicability
- Onshore & Offshore blasting and painting services
- Complementary anti-corrosion solutions
- Certified rope access and scaffolding solutions
- Full service industrial plant inspection solutions

Vision

To be the reference in providing industrial services worldwide



LOGISTICS



EQUIPMENT RENTAL

- Light vehicles (4x4 pick-ups / 4x4 buses / SUV / Sedan).
- Heavy road transport (6x6 trucks with lifting crane / 6x4 trucks etc).
- Lifting equipment (4x4 cranes / telehandlers / forklifts etc).

LOGISTICS SERVICES

- Personnel transportation
- Cargo transportation
- Refrigerated transportation
- Cross border transportation

LOGISTICS SUPPORT

- Full life cycle maintenance
- OEM in-country spare - part stock availability
- In-country OPS support backed by global team



CAR RENTAL OPTIONS



PICK-UP 4X4 VEHICLES



4X4 SUV VEHICLES



4X2 SUV VEHICLES

CAR RENTAL SERVICES

- Dedicated Fleet Services
- On-Spot Rental Services
- VIP Transport Services
- Personnel transportation
- Full Fleet Management Services



PERSONNEL TRANSPORTATION



30 SEATS BUSES



16 SEATS BUSES

Supported Solutions & Services



EXPERIENCED DRIVER



**DEDICATED FLEET WITH
ROUTE OPTIONS**



**OIL & GAS STANDARD
SETUP**



**MAINTENANCE
INCLUDED**



**GPS SAFETY TRACKING
SYSTEM**



**LOCAL OPS TEAM
SUPPORTED BY INT TEAM**

HEAVY EQUIPMENT RENTAL

Heavy Axle trucks

Onstream Group can offer a comprehensive range of **dedicated Trucks for different applications.**

With option from: tractor heads, crane trucks, crane trucks with flatbed (4x4 to 6x6), 20.000-liter fuel and water truck.
All built with African market specs with excellent ground clearance for road and rugged terrain.
Units can be proposed on spot rental or on full dedicated fleet contract including operators and maintenance.



VISIT [ONSTREAMGROUP.COM](https://onstreamgroup.com)



HEAVY EQUIPMENT RENTAL

ROUGH TERRAIN CRANES

Onstream Group can offer a comprehensive range of **ROUGH TERRAIN CRANES**. With the capacity starting from **35 tons up to 90 tons**. With excellent ground clearance and up to four steering modes, positioning these cranes in even the most rugged terrain is not a problem.

Model		Rated capacity t (US t)	Max. boom length m (ft)	Max. tip height m (ft)*	Gross vehicle weight t (US t)**	Transport width m (ft)	Transport height m (ft)
RT 35-1	€	35 (39.0)	30.1 (98.0)	38.0 (124.7)	24.6 (27.1)	2.55 (8.4)	3.4 (11.2)
RT 1045	€	45 (50.0)	31.1 (102.0)	47.0 (154.2)	28.8 (32.3)	2.55 (8.4)***	3.5 (11.5)
RT 1045L	€	44 (49.3)	37.4 (122.7)	47.5 (155.8)	28.1 (31.5)	2.55 (8.4)***	3.5 (11.5)
RT 1070	€	70 (77.0)	32.4 (106.0)	55.0 (180.4)	41.4 (45.5)	3.0 (9.8)	3.8 (12.5)
RT 1080	€	80 (88.0)	34.0 (111.5)	56.0 (183.7)	44.8 (49.3)	3.0 (9.8)	3.8 (12.5)
RT 1080L	€	80 (88.0)	42.1 (138.1)	58.5 (191.9)	47.0 (51.7)	3.0 (9.8)	3.9 (12.8)
RT 90	€	90 (100.0)	47.0 (154.0)	66.0 (216.5)	52.6 (57.8)	3.0 (9.8)***	3.9 (12.8)



HEAVY EQUIPMENT RENTAL

ALL TERRAIN CRANES

Onstream Group has at its disposal a range of **DEMAG ALL TERRAIN CRANES**. With the capacity from **60 tons** **100 Tons** and **130 tons**. Demag all terrain cranes can go just about anywhere on the planet, ready to help you tackle the most demanding jobs quickly, safely, efficiently.

Model	Capacity class † (US†)	Max. boom length m (ft)	Max. system length m (ft)	Axles
AC 60-3	60 (65)	50.0 (164.0)	66.0 (216.5)	3
AC 100-4L	100 (120)	59.4 (194.9)	81.7 (268.0)	4
AC 130-5	130 (140)	60.0 (197.0)	86.5 (283.8)	5



HEAVY EQUIPMENT RENTAL

FORKLIFT

Onstream Group can offer a comprehensive range of **FORKLIFT**. With the capacity starting from **1,5 tons up to 30-ton**. These equipment are designed to meet the requirements of customers who operate in standard operations. Range of products represents industry leading innovations that deliver what matters most to users in more intense operations – maximum uptime, maximum productivity and serviceability.



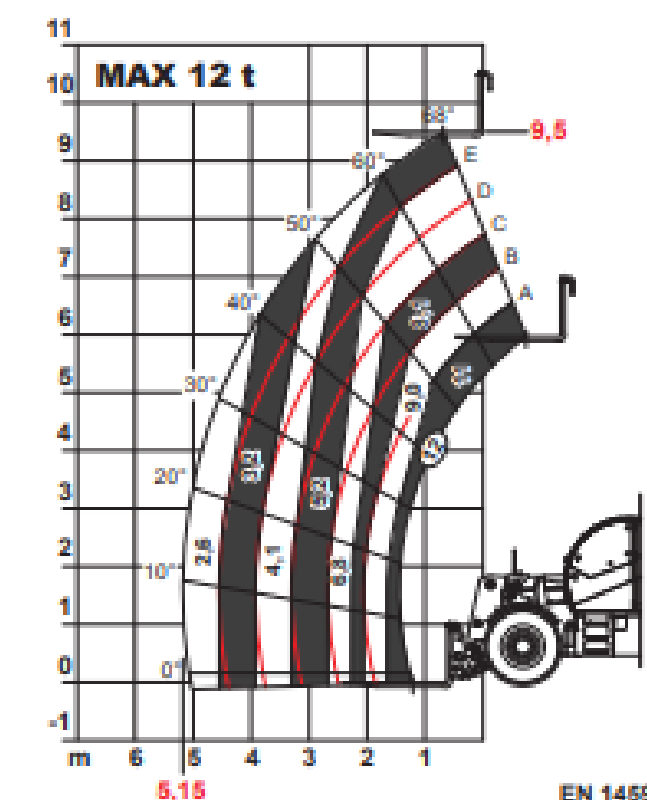
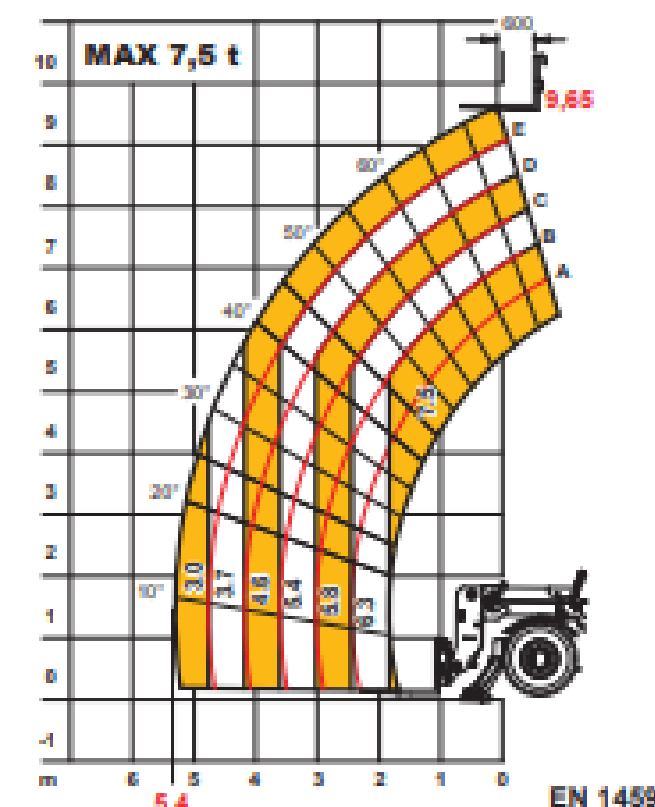
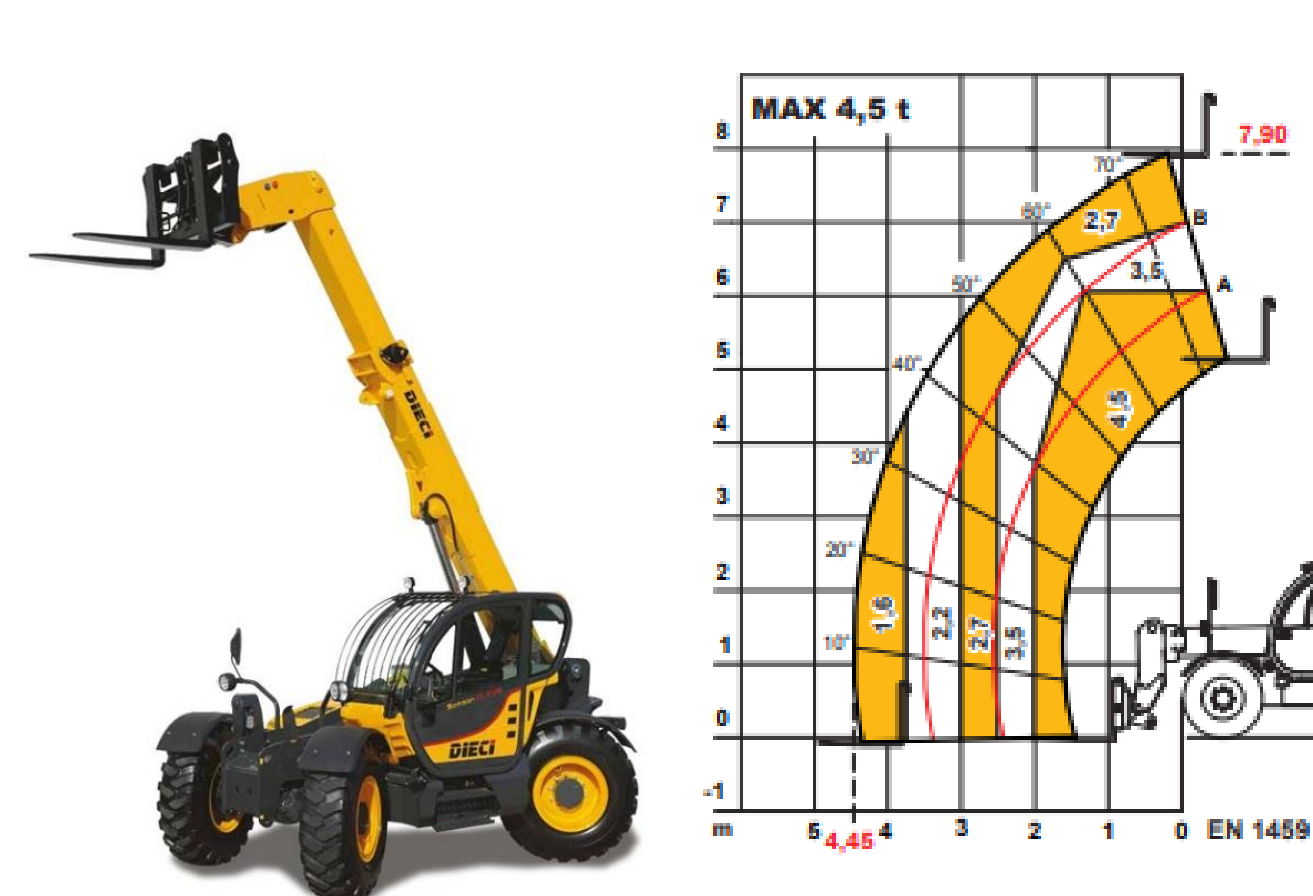
VISIT [ONSTREAMGROUP.COM](https://onstreamgroup.com)



HEAVY EQUIPMENT RENTAL

TELESCOPIC HANDLER

Onstream Group can offer a comprehensive range of **TELEHANDLER FORKLIFTS**. With the capacity starting from **4,5 ton up to 12 ton**. These equipment are designed to meet the requirements of customers who operate in standard operations. Range of products represents industry leading innovations that deliver what matters most to users in more intense operations – maximum uptime, maximum productivity and serviceability.





Hydraulic Winch



SWL

3000kg - 8000kg



EXTENDABLE FRONT BASKET



OPTIONAL ATTACHMENT FOR TELEHANDLERS

HEAVY EQUIPMENT RENTAL

AERIAL PLATFORM

Onstream Group can have at its disposal a wide range of Diesel engine **AERIAL PLATFORM** ranging between **scissor, articulated and telescopic boom lift**. With the work height capacity for the scissors between 10 to 49, for the articulated between 10 to 43 meter and for the telescopic between 14 to 56 meter. This will give you the extra reach you need to work over and around obstacles on the job site.



VISIT [ONSTREAMGROUP.COM](https://onstreamgroup.com)





CONTINUOUS IMPROVEMENT

We regularly conducts the following trainings, as per our HSE plan:

- Defensive Driving Training
- Fatigue Awareness Training
- Journey Management Training
- First Aid Training
- Fire Warden Training

EFFICIENT REPORTING SCHEMES

- Daily toolbox talks
- Weekly/Monthly HSE reports
- Monthly executive management meetings

VISIT [ONSTREAMGROUP.COM](https://onstreamgroup.com)



We think Global, We act Local!

We believe that we can bring added value to a host nation, region or local community through:

Embracing and expanding the workforce development by:

- Employment of local workforce
- Training of local workforce
- Investing in supplier development:
- Developing supplies and services locally
- Procuring supplies and services locally



MANPOWER

Full service support



VISIT ONSTREAMGROUP.COM

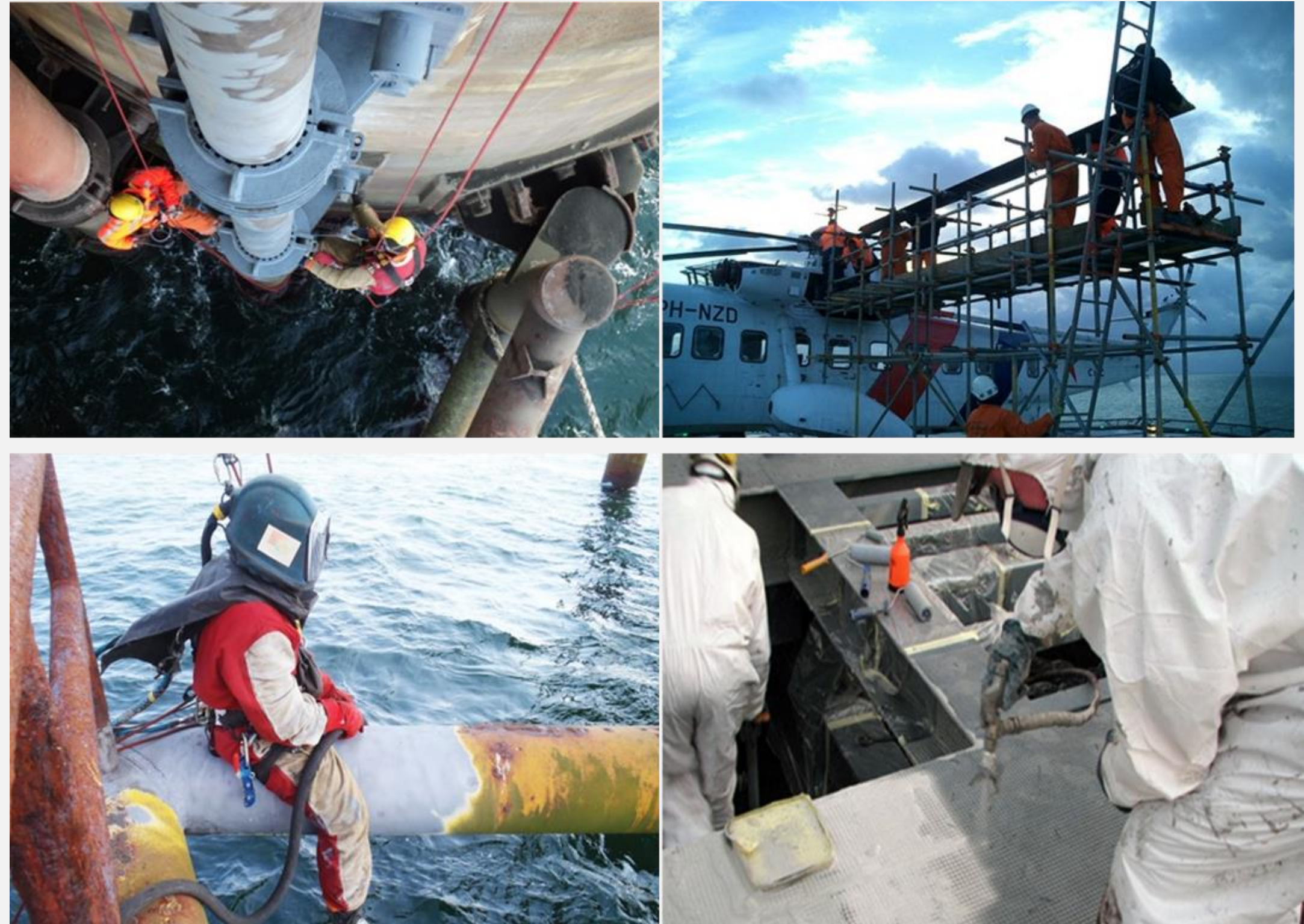


ASSET INTEGRITY

Onstream Group prides itself with over 30 years of experience in the global Oil & Gas Industry, providing integrated Asset Integrity Solutions to our clients worldwide. Our Technical Operations Team will provide tailored and cost effective solutions for your projects both on- and offshore.

Complete package offering includes

- Blasting & Painting
- Anti-corrosion Services
- Mechanical Preparation
- Scaffolding and Rope Access
- Inspection Services



GLOBAL PRODUCT DISTRIBUTION

ONSTREAM YOUR SAFETY PARTNER

Diesel engine overspeed protection



CHALWYN
World class manufacturer of safety solutions

Alcohol breathalyser & vehicle immobiliser



 **ALCOLOCK**

VISIT ONSTREAMGROUP.COM



DIESEL ENGINE SAFETY

The Chalwyn 'D' series valve and spark arrestor range has become universally recognized as the first choice for reliable diesel engine overspeed protection.

Prevent Detonation Catastrophe!!

- No external power source required
- Wide range of sizes available
- Automatically stops the engine before excess speed causes
- Damage or flashback
- Valve resets once engine has stopped.



ROAD SAFETY SOLUTIONS

Recent statistics show around 14% of all deaths in reported road traffic accidents involved at least one driver over the drink drive limit.

TAKE ACTION NOW!

The Alcolock® system consists of two parts;

- The alcohol breathalyser unit into which the driver provides a breath sample
- The immobiliser that will prevent the vehicle from starting if the breath sample provided is above the set limit.



ALCOLOCK

SELECTED ONSTREAM CLIENTS



VISIT ONSTREAMGROUP.COM



VISIT **ONSTREAMGROUP.COM**

The Netherlands | Gabon | Nigeria | Mozambique | Kazakhstan | Iraq | Switzerland | Monaco

NAME: Gregory Hernandez
POSITION: Group Commercial Manager – Logistic Services
Email: g.hernandez@onstreamgroup.com
Mobile: 0031 6 53 84 64 67

NAME: Jean Baptiste Taormina
POSITION: Technical Manager
Email: j.taormina@onstreamgroup.com
Mobile: 00258 85 219 52 60

Excellence **SINCE 1978**

